

General Information

The PNT 200 is a light, practical, and well-balanced compressed air tool that installs Blind rivet nuts safely and reliably. The tool features hydraulic-pneumatic power transmission - a proven technique that yields high performance and operational reliability. All functions are controlled easily and quickly by means of the convenient control trigger. The PNT 200 complies with the high demands for problem-free function, and is a tool to be recommended even for demanding series production. Manufactured from high grade materials. Steel parts are hardened and tempered to a strength that meets the strictest quality specification.

Simple to maintain, with all parts available as spares.

Introducción

La remachadora PNT 200 es una herramienta neumática de concepción ligera y funcional para fijar tuercas remachables de manera efectiva y segura. Gracias a su gatillo, en el cual se integran todas las funciones de la máquina, su funcionamiento resulta de los más sencillos. La PNT200 es adecuada para satisfacer los requisitos más exigentes de una producción en serie.

La remachadora está fabricada en materiales de alta calidad y los componentes pueden suministrarse como repuestos y son completamente intercambiables.

Specifications

Data	PNT 200
Length:	5.91"
Height:	8.67"
Weight:	2.65 lb
Air consumption:	0,9 litre free air/minute
Working air pressure:	6 - 7 bar
Stroke	0 - .2"

Datos Técnicos

Datos	PNT 200
Longitud (mm)	150
Altura (mm)	220
Peso (kg)	1,2
Consumo aire (l/recorrido)	0,9
Presión (bares)	6 - 7
Recorrido (mm)	0 - 5

Setting Rivets

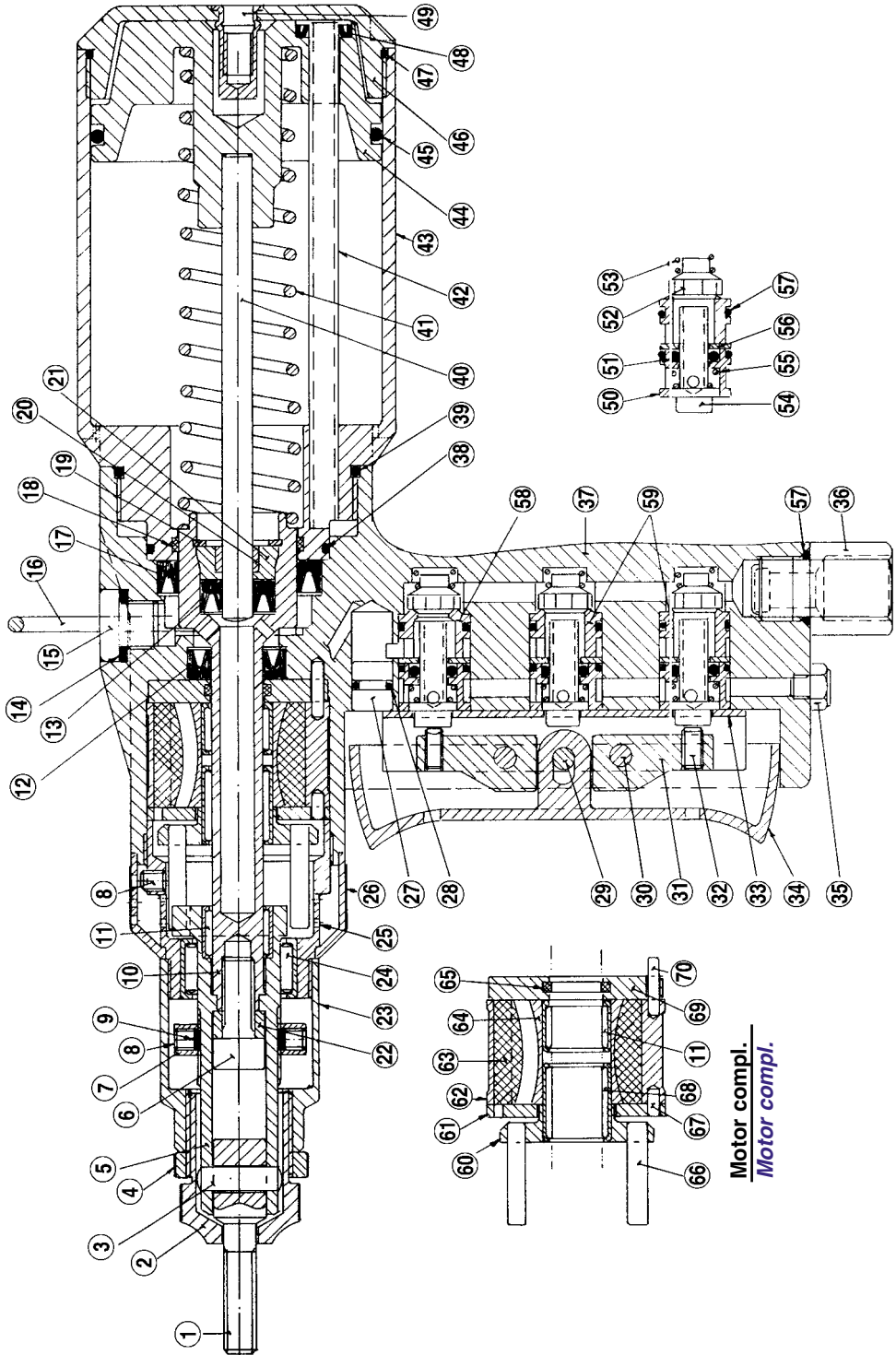
Capacity:

Material Threaded Inserts	Threaded Inserts				
	M3	M4	M5	M6	M8
Aluminium	●	●	●	●	●
Steel	●	●	●	●	
Stainless Steel	●	●	●		
Brass	●	●	●	●	

Capacidad de Remachado

La PNT 200 coloca las siguientes tuercas:

Material de la Tuerca	Tamaño Tuerca				
	M3	M4	M5	M6	M8
Aluminio	●	●	●	●	●
Acero	●	●	●	●	
Acero Inoxidable	●	●	●		
Latón	●	●	●	●	



Motor compl.
Motor compl.

Parts List

Lista de Componentes

Item Ref.	Article No. Código	Description	Descripción	Part Code Ref. Fab.	Qty / Cant. PNT 200
1	95465	Threaded Mandrel M3	Mandril M3	PNT650-11513	1
1	42832	Threaded Mandrel M4	Mandril M4	PNT650-11514	1
1	42833	Threaded Mandrel M5	Mandril M5	PNT650-11520	1
1	42834	Threaded Mandrel M6	Mandril M6	PNT650-11521	1
1	42835	Threaded Mandrel M8	Mandril M8	PNT650-11523	1
2	95464	M3 Nosepiece	Boquilla M3	PNT500-193	1
2	42506	M4 Nosepiece	Boquilla M4	PNT500-194	1
2	42507	M5 Nosepiece	Boquilla M5	PNT500-195	1
2	42508	M6 Nosepiece	Boquilla M6	PNT500-196	1
2	42509	M8 Nosepiece	Boquilla M8	PNT500-198	1
3	42837	Locking Pin	Anillo de cierre	PNT650-1102	1
4	42512	Locking Ring	Anillo	PNT500-104	1
5	95826	Studholder	Soporte	PNT200-05	1
6	42650	Cap Screw	Tornillo	PNT600-35	1
7	95655	Setting Ring	Anillo de ajuste	PNT650-04	1
8	95706	Set Screw	Tornillo de ajuste	PNT600-53A	3
9	95765	Nylon Plug	Tapón de nylon	PNT600-53B	2
10	42910	Hydraulic Piston	Pistón hidráulico	PNT200-10	1
11	95825	Needle Bearing	Rodamiento	PNT200-11	2
12	10137	Seal	Junta	PNT200-12	1
13	10138	Seal	Junta	PNT200-13	1
14	42661	Bleed Washer	Arandela	PNT800-16	1
15	18790	Bleed Screw	Tornillo de relleno de aceite	PNT800-75	1
16	95828	Suspension Ring	Anilla de colgar	PNT200-16	1
17	10139	Seal	Junta	PNT200-17	1
18	10140	Bearing Sleeve	Manguito	PNT200-18	1
19	95831	Locking Ring	Anillo de cierre	PNT200-19	1
20	10141	Bearing Sleeve	Manguito	PNT200-20	1
21	95833	Piston Guide	Guía del pistón	PNT200-21	1
22	95834	Spacer	Separador	PNT200-22	1
23	95835	Sleeve	Manguito	PNT200-23	1
24	42603	Needle Bearing	Rodamiento	PNT600-08	1
25	95836	Front Nose	Carcasa frontal	PNT200-25	1
26	95837	Air Control Sleeve	Manguito control de aire	PNT200-26	1
27		Plug	Conector	PNT200-27	1
28	42679	O-Ring	Junta tórica	PNT600-82	2
29	18765	Pivot Pin	Pasador	PNT800-50	1
30	18766	Pivot Pin	Pasador	PNT800-51	2
31	18761	Valve Operator	Órgano de comando de válvula	PNT800-46	2
32		Screw	Tornillo	PNT200-47	2
33	95839	Operator Bracket	Pletina accionadora	PNT200-33	1
34	95840	Valve Stem	Gatillo	PNT200-34	1
35	95841	Silencer	Silenciador	PNT200-35	1
36	95686	Inlet Adapter	Adaptador	PNT600-33	1
37	95842	Pistol Housing	Carcasa	PNT200-37	1
38	95843	O-Ring	Junta tórica	PNT200-38	1
39	95844	O-Ring	Junta tórica	PNT200-39	1
40	95845	Air Piston Rod	Émbolo del pistón	PNT200-40	1
41	95846	Spring	Muelle	PNT200-41	1
42	95848	Connecting Tube	Tubo conector	PNT200-42	1
43	95849	Air Cylinder	Cilindro de aire	PNT200-43	1
44	42857	Air Piston	Pistón de aire	PNT200-44	1
45		O-Ring	Junta tórica	PNT200-45	1
46	95851	End Plate	Tapa trasera	PNT200-46	1
47		O-Ring	Junta tórica	PNT200-47	1

Parts List

Lista de Componentes

Item Ref.	Article No. Código	Description	Descripción	Part Code Ref. Fab.	Qty / Cant. PNT 200
48	10147	Seal	Junta	PNT200-48	1
49	95853	Rivet Nut	Tuerca remachable	PNT200-49	1
50	42912	Valve Guide	Guía de la válvula	PNT800-71	3
51	42633	O-Ring	Junta tórica	PNT600-80	3
52	42614	Valve	Válvula	PNT600-29	3
53	42669	Spring	Muelle	PNT600-57	3
54	18787	Valve Stem	Vástago de la válvula	PNT800-72	3
55	95854	Spring	Muelle	PNT200-55	3
56	42667	Spacer	Separador	PNT600-55	3
57	42632	O-Ring	Junta tórica	PNT600-79	7
58	95855	Valve Seat	Cojinete	PNT200-58	1
59	95856	Valve Seat	Cojinete	PNT200-59	2
60	07991	Coupling	Acoplamiento	PNT200-60	1
61	08774	Front Plate	Placa frontal	PNT200-61	1
62	95859	Cylinder	Cilindro	PNT200-62	1
63	95860	Rotor Blade	Pala del rotor	PNT200-63	5
64	95861	Rotor	Rotor	PNT200-64	1
65	95862	Bearing Sleeve	Manguito	PNT200-65	1
66	95863	Pin	Eje	PNT200-66	2
67	95864	Front Locating Pin	Espárrago	PNT200-67	1
68	95865	Needle Bearing	Rodamiento	PNT200-68	1
69	95866	Rear Plate	Placa posterior	PNT200-69	1
70	95867	Locating Pin	Eje guía	PNT200-70	1